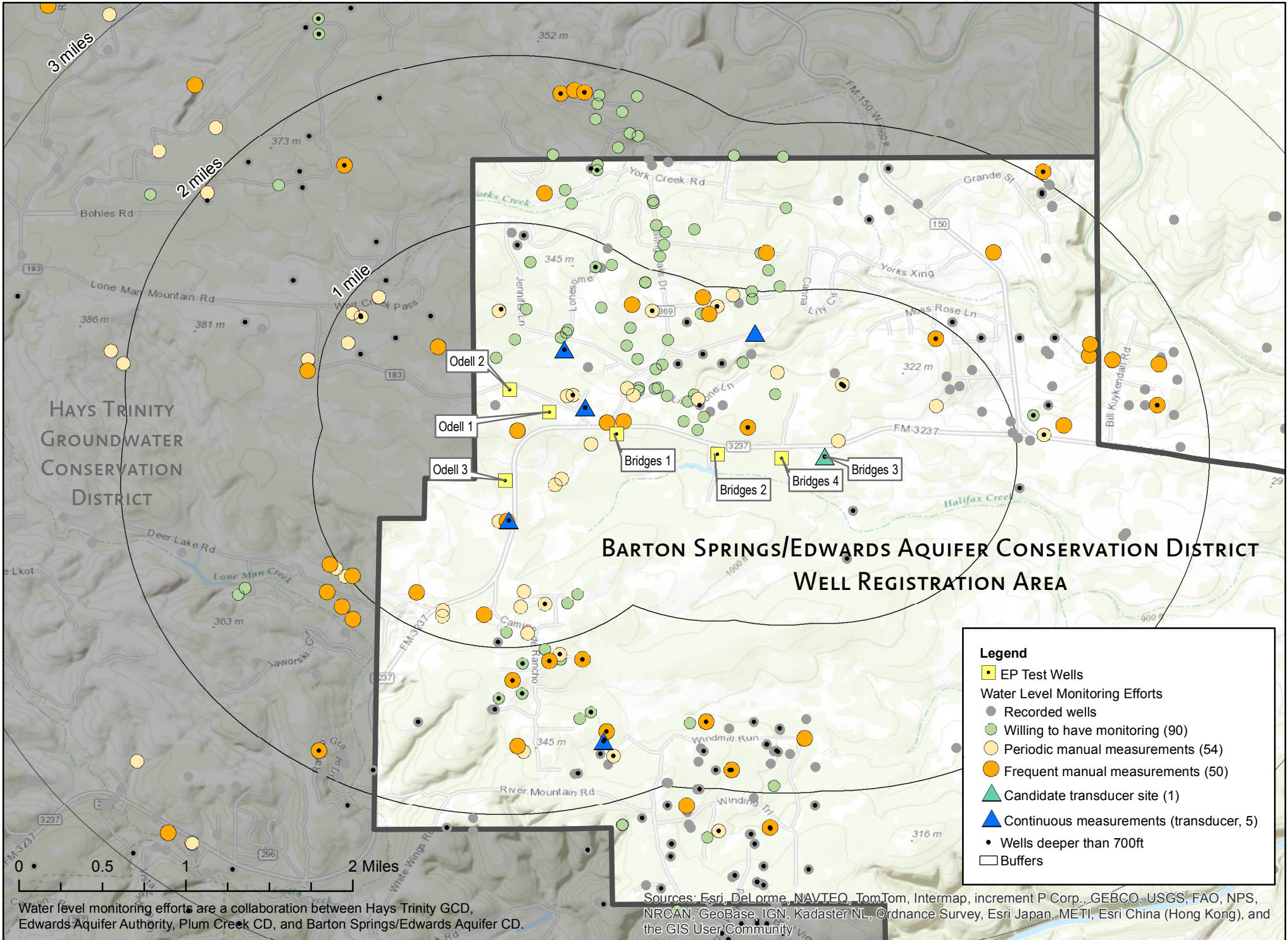


Central Hays County Groundwater Evaluation Well Monitoring - July 28, 2015



Water level monitoring efforts are a collaboration between Hays Trinity GCD, Edwards Aquifer Authority, Plum Creek CD, and Barton Springs/Edwards Aquifer CD.

Sources: Esri, DeLorme, NAVTEQ, TomTom, Intermap, increment P Corp., GEBCO, USGS, FAO, NPS, NRCAN, GeoBase, IGN, Kadaster NL, Ordnance Survey, Esri Japan, METI, Esri China (Hong Kong), and the GIS User Community