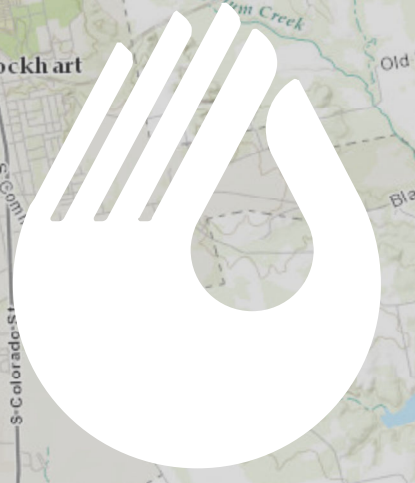
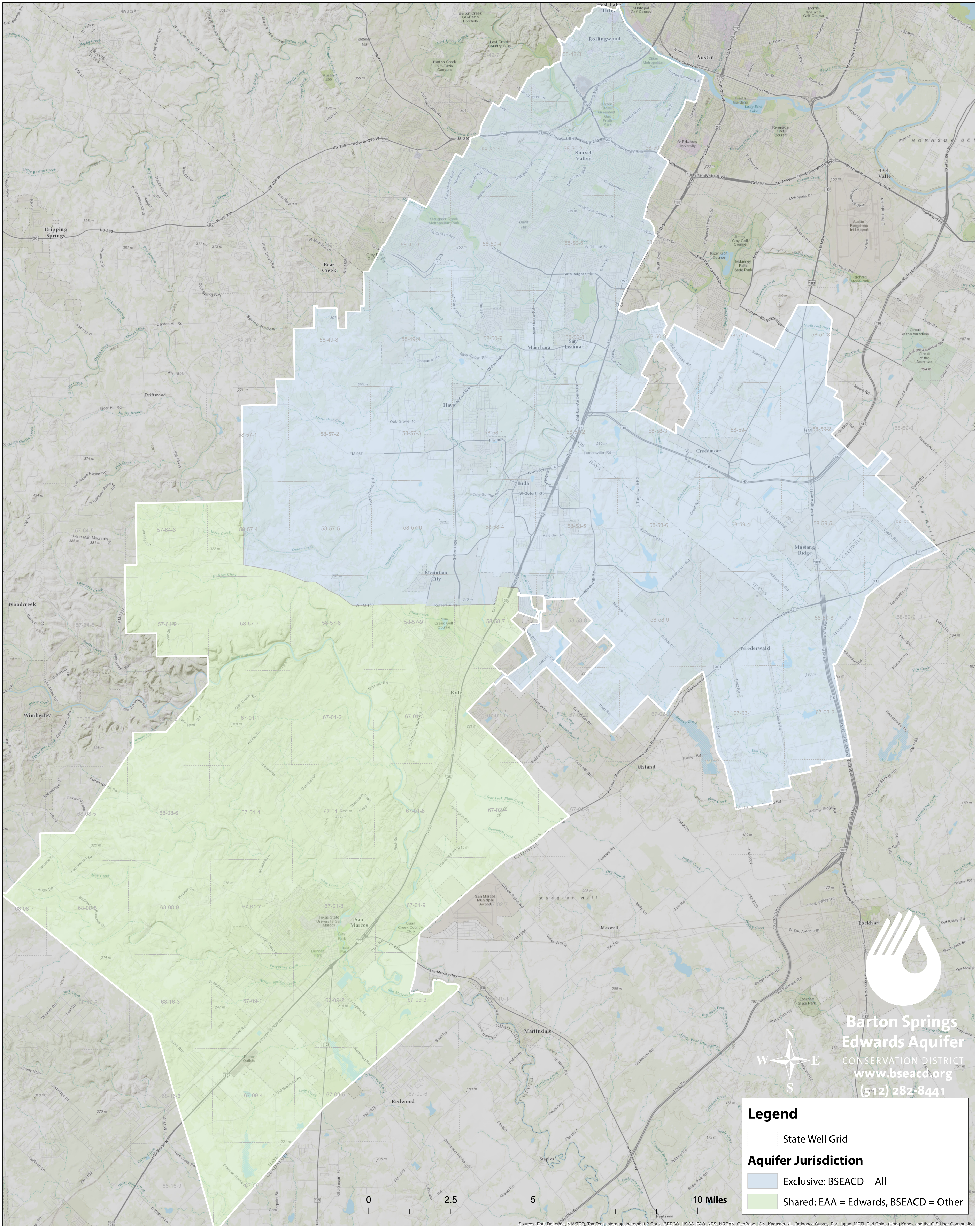


# Barton Springs/Edwards Aquifer Conservation District Jurisdiction



**Barton Springs  
Edwards Aquifer**  
CONSERVATION DISTRICT  
[www.bseacd.org](http://www.bseacd.org)  
(512) 282-8441

**Legend**

- State Well Grid
- Aquifer Jurisdiction**
  - Exclusive: BSEACD = All
  - Shared: EAA = Edwards, BSEACD = Other

0 2.5 5 10 Miles