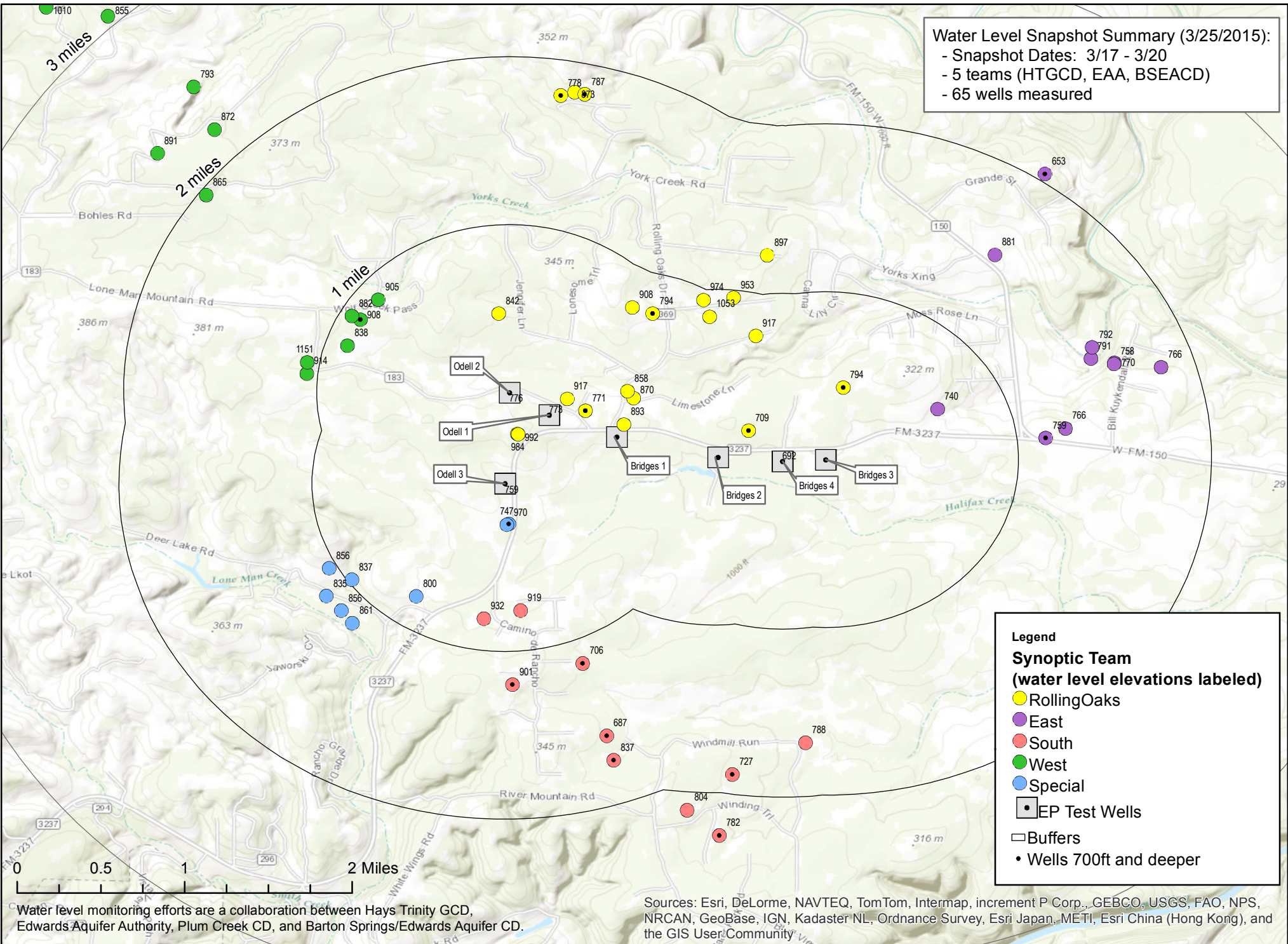


Central Hays County Groundwater Evaluation Water Level Snapshot - March 25, 2015

Water Level Snapshot Summary (3/25/2015):
 - Snapshot Dates: 3/17 - 3/20
 - 5 teams (HTGCD, EAA, BSEACD)
 - 65 wells measured



Legend

Synoptic Team (water level elevations labeled)

- Rolling Oaks
- East
- South
- West
- Special

■ EP Test Wells

□ Buffers

• Wells 700ft and deeper

Water level monitoring efforts are a collaboration between Hays Trinity GCD, Edwards Aquifer Authority, Plum Creek CD, and Barton Springs/Edwards Aquifer CD.

Sources: Esri, DeLorme, NAVTEQ, TomTom, Intermap, increment P Corp., GEBCO, USGS, FAO, NPS, NRCAN, GeoBase, IGN, Kadaster NL, Ordnance Survey, Esri Japan, METI, Esri China (Hong Kong), and the GIS User Community