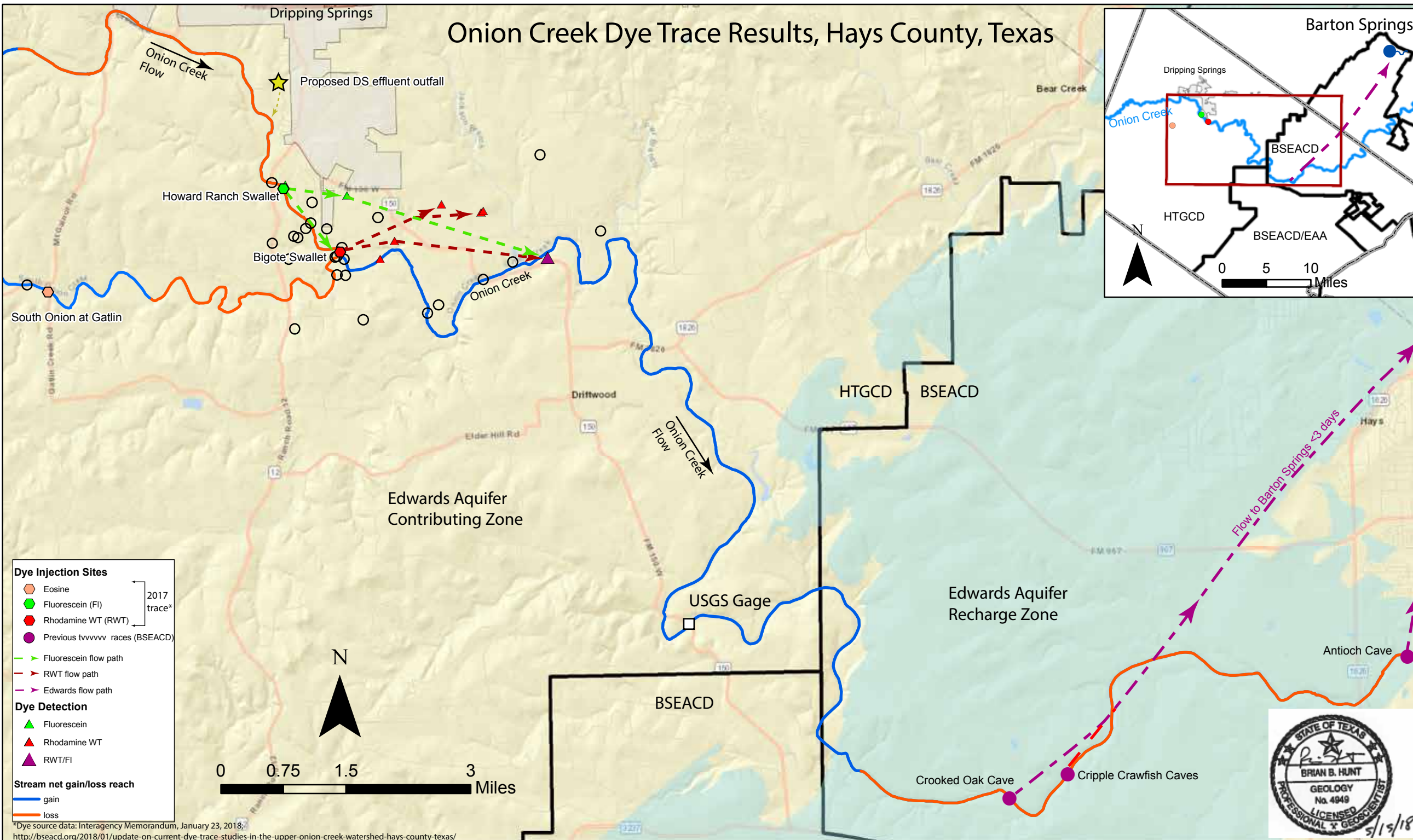
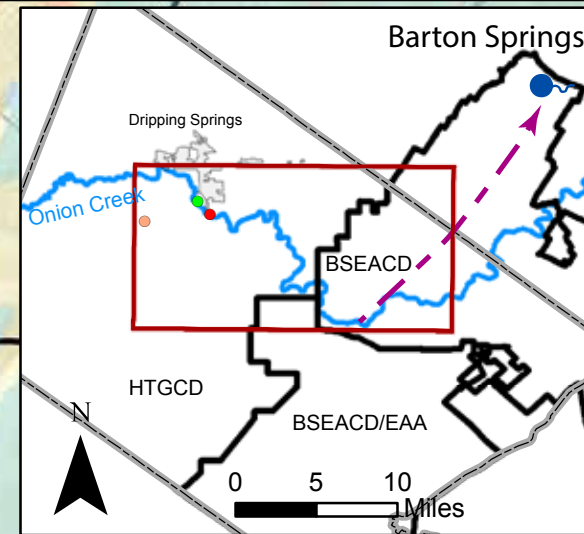


Onion Creek Dye Trace Results, Hays County, Texas



Dye Injection Sites

- Eosine
- Fluorescein (FI)
- Rhodamine WT (RWT)
- Previous tvvvvv races (BSEACD)

2017 trace*

Dye Detection

- ▶ Fluorescein flow path
- ▶ RWT flow path
- ▶ Edwards flow path

Dye Detection

- ▲ Fluorescein
- ▲ Rhodamine WT
- ▲ RWT/FI

Stream net gain/loss reach

- gain
- loss

*Dye source data: Interagency Memorandum, January 23, 2018.
<http://bseacd.org/2018/01/update-on-current-dye-trace-studies-in-the-upper-onion-creek-watershed-hays-county-texas/>

