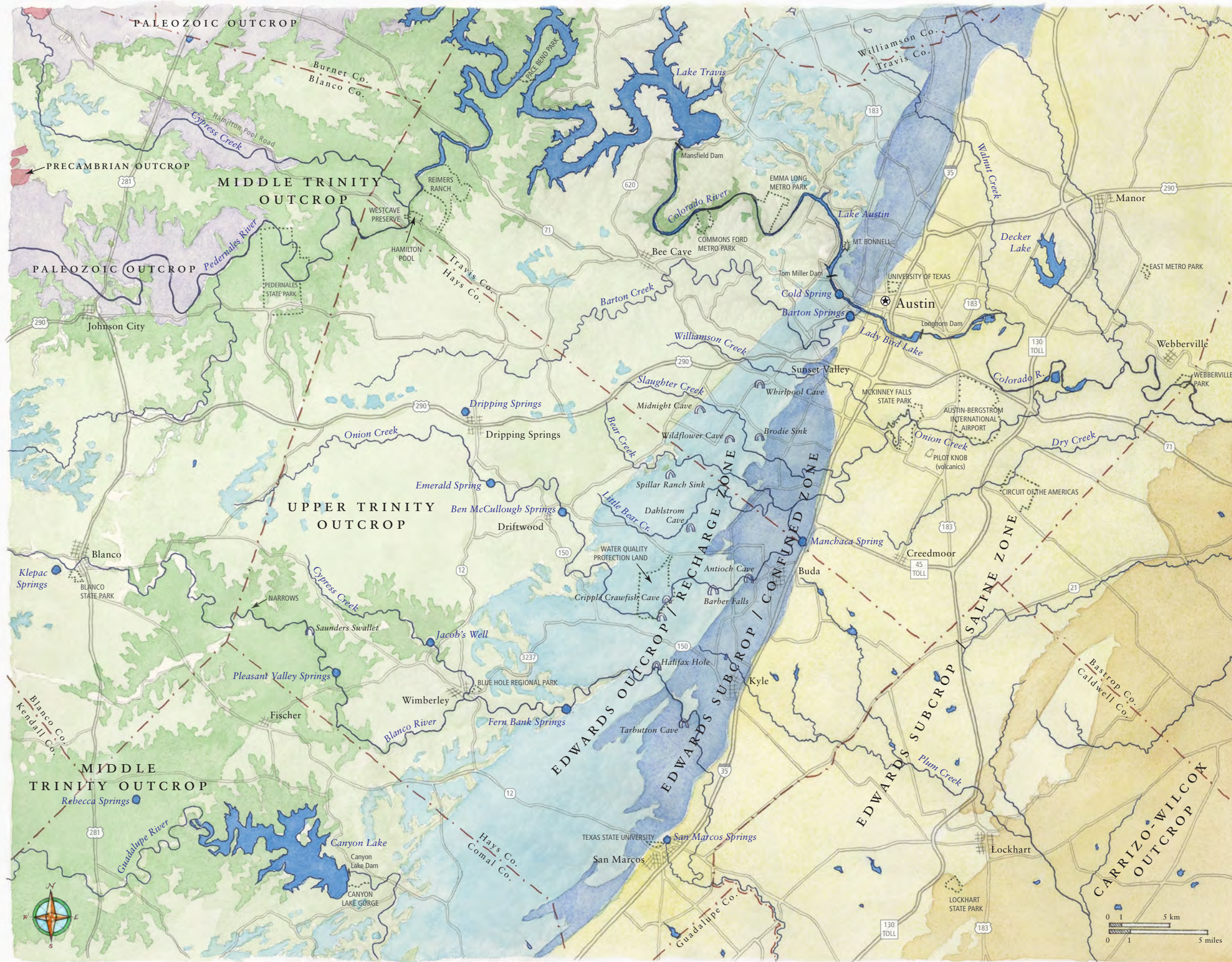
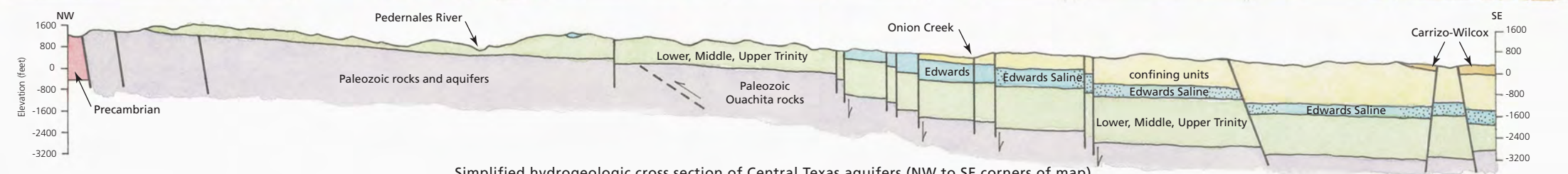


# Central Texas Water Resources



geologic age	hydrostratigraphy	group	formation	stratigraphic column & geologic features
Tertiary 65 – 2 million years ago	CARRIZO-WILCOX AQUIFER		Carrizo	
			Wilcox	
Upper Cretaceous 100 – 65 million years ago	confining units and perched aquifers		Taylor	
			Austin Chalk	
			Eagle Ford	
			Buda	
			Del Rio	
	EDWARDS AQUIFER	Edwards Group	Person Formation	
			Kainer Formation	
			Walnut Fm	
Lower Cretaceous 145 – 100 million years ago	UPPER TRINITY AQUIFER	Trinity Group	Glen Rose Formation Upper Glen Rose Mbr	
			MIDDLE TRINITY AQUIFER	
	LOWER TRINITY AQUIFER	Trinity Group	Lower Glen Rose Mbr	
			semi-confining unit	
			confining unit	
Paleozoic 540 – 250 m.y.a.	PALEOZOIC AQUIFERS		Hensell	
			Cow Creek	
			Hammett	
			Sligo	
			Sycamore/Hosston	
Precambrian > 540 million years ago	CRYSTALLINE ROCK AQUIFERS		undifferentiated Precambrian	

- spring
- cave/sinkhole/swallet



Simplified hydrogeologic cross section of Central Texas aquifers (NW to SE corners of map)

Credits & Citations  
 Illustration by Molly O'Halloran  
 Hydrogeologic cross section after Brune & Duffin 1983  
 Stratigraphic column after Wierman et al. 2010  
 ©BSEACD 2017

