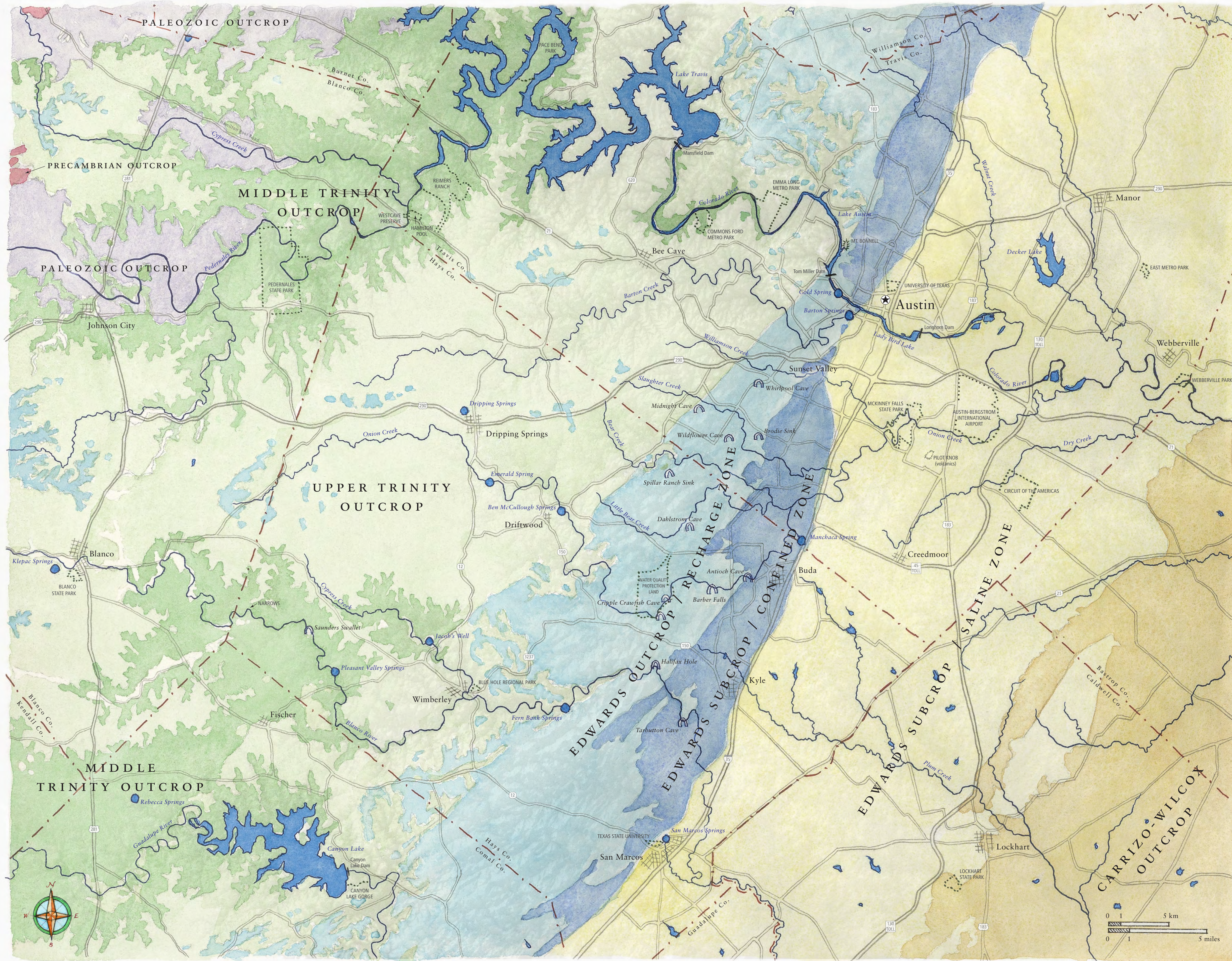
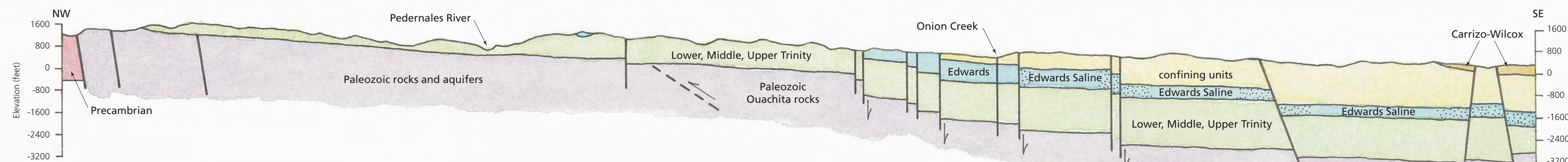
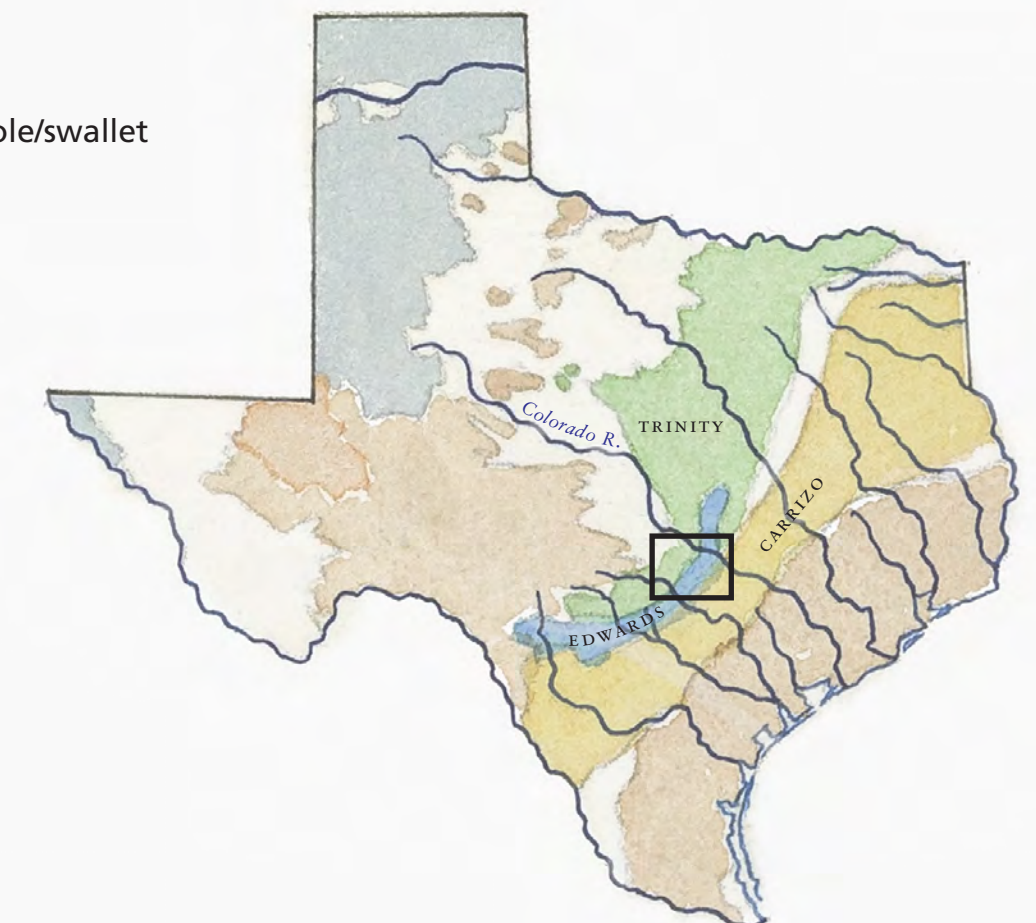


# Central Texas Water Resources



geologic age	hydrostratigraphy	group	formation	stratigraphic column & geologic features
Tertiary 65 – 2 million years ago	CARRIZO-WILCOX AQUIFER		Carrizo	
			Wilcox	
Upper Cretaceous 100 – 65 million years ago	confining units and perched aquifers		Taylor	
			Austin Chalk	
			Eagle Ford	
			Buda	
			Del Rio	
			Georgetown	
Lower Cretaceous 145 – 100 million years ago	EDWARDS AQUIFER	Edwards Group	Person Formation	
			Kainer Formation	
		Walnut Fm		
		Trinity Group	Glen Rose Formation	
			Upper Glen Rose Mbr	
		Lower Glen Rose Mbr		
		MIDDLE TRINITY AQUIFER		
		semi-confining unit		
		confining unit		
		LOWER TRINITY AQUIFER		
		Hensell		
		Cow Creek		
Hammett				
Sligo				
Sycamore/Hosston				
Paleozoic 540 – 250 million years ago	PALEOZOIC AQUIFERS	undifferentiated Paleozoic		
Precambrian > 540 million years ago	CRYSTALLINE ROCK AQUIFERS	undifferentiated Precambrian		

- spring
- cave/sinkhole/swallet



Simplified hydrogeologic cross section of Central Texas aquifers (NW to SE corners of map)

Credits & Citations  
 Illustration by Molly O'Halloran  
 Hydrogeologic cross section after Brune & Duffin 1983  
 Stratigraphic column after Wiernan et al. 2010  
 ©SEACD 2017



Barton Springs  
 Edwards Aquifer  
 CONSERVATION DISTRICT